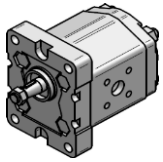
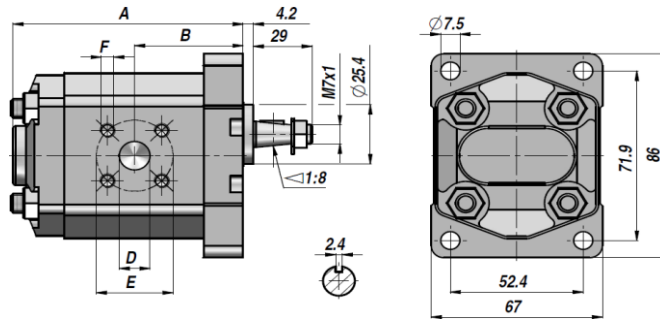


PC-1

POMPA ZĘBATA GR. 1
GEAR PUMP



KOŁNIERZ EURO $\varnothing 25.4$
WAŁEK STOŻKOWY 1:8
STANDARD EUROPEAN $\varnothing 25.4$ FLANGE
1:8 TAPER SHAFT



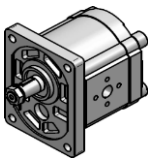
Kod Code	Typ Type	cm ³ /obr cm ³ /rev	P MAX bar		obr/min rpm		A	B	Ssanie Suction D x E x F	Tłoczenie Delivery D x E x F	kg
			P1	P3	MAX	MIN					
PC*111ECC1A	PC*111	1,10	200	250	6000	700	75	33	$\varnothing 12 \times 30 \times M6$	$\varnothing 12 \times 30 \times M6$	0,87
PC*113ECC1A	PC*113	1,30	200	250	6000	700	76	34	$\varnothing 12 \times 30 \times M6$	$\varnothing 12 \times 30 \times M6$	0,89
PC*116ECC1A	PC*116	1,60	200	250	6000	700	78	35	$\varnothing 12 \times 30 \times M6$	$\varnothing 12 \times 30 \times M6$	0,90
PC*121ECC1A	PC*121	2,10	200	250	6000	700	79	36	$\varnothing 12 \times 30 \times M6$	$\varnothing 12 \times 30 \times M6$	0,92
PC*127ECC1A	PC*127	2,70	200	250	6000	700	81	37	$\varnothing 12 \times 30 \times M6$	$\varnothing 12 \times 30 \times M6$	0,95
PC*132ECC1A	PC*132	3,20	200	230	5000	700	83	38	$\varnothing 12 \times 30 \times M6$	$\varnothing 12 \times 30 \times M6$	0,97
PC*137ECC1A	PC*137	3,70	200	230	4500	700	85	39	$\varnothing 12 \times 30 \times M6$	$\varnothing 12 \times 30 \times M6$	1,00
PC*142ECC1A	PC*142	4,20	200	230	4000	700	87	40	$\varnothing 12 \times 30 \times M6$	$\varnothing 12 \times 30 \times M6$	1,02
PC*148ECC1A	PC*148	4,80	160	200	3500	700	89	41	$\varnothing 12 \times 30 \times M6$	$\varnothing 12 \times 30 \times M6$	1,05
PC*158ECC1A	PC*158	5,80	160	200	2900	700	93	43	$\varnothing 12 \times 30 \times M6$	$\varnothing 12 \times 30 \times M6$	1,10
PC*179ECC1A	PC*179	8,00	160	180	2100	700	101	47	$\varnothing 12 \times 30 \times M6$	$\varnothing 12 \times 30 \times M6$	1,20

* S = LEWE OBROTY - ANTICLOCKWISE
* D = PRAWY OBROT - CLOCKWISE

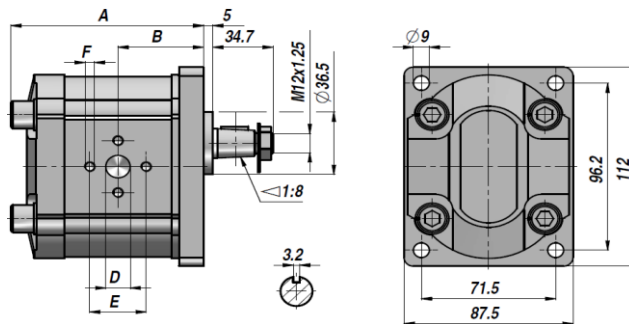
P1 = MAX. CIŚNIENIEI ROBOCZE - MAX. WORKING PRESSURE
P3 = MAX. CIŚNIENIE SZCZYTOWE - MAX. PEAK PRESSURE

PC-2

POMPA ZĘBATA GR. 2
GEAR PUMP



KOŁNIERZ EURO $\varnothing 36.5$
WAŁEK STOŻKOWY 1:8
STANDARD EUROPEAN $\varnothing 36.5$ FLANGE
1:8 TAPER SHAFT



Kod Code	Typ Type	cm ³ /obr cm ³ /rev	P MAX bar		obr/min rpm		A	B	Ssanie Suction D x E x F	Tłoczenie Delivery D x E x F	kg
			P1	P3	MAX	MIN					
PC*206EAA1G	PC*206	6.00	200	250	3000	700	100	47	$\varnothing 13 \times 30 \times M6$	$\varnothing 13 \times 30 \times M6$	3,41
PC*208EAA1G	PC*208	8.00	200	250	3000	700	104	49	$\varnothing 13 \times 30 \times M6$	$\varnothing 13 \times 30 \times M6$	3,51
PC*210EAA1G	PC*210	10.00	200	250	3000	700	106	50	$\varnothing 20 \times 40 \times M8$	$\varnothing 13 \times 30 \times M6$	3,57
PC*212EAA1G	PC*212	12.00	200	230	3000	700	110	52	$\varnothing 20 \times 40 \times M8$	$\varnothing 13 \times 30 \times M6$	3,71
PC*214EAA1G	PC*214	14.00	200	230	3000	700	112	53	$\varnothing 20 \times 40 \times M8$	$\varnothing 13 \times 30 \times M6$	3,74
PC*216EAA1G	PC*216	16.00	200	230	3000	700	116	55	$\varnothing 20 \times 40 \times M8$	$\varnothing 13 \times 30 \times M6$	3,86
PC*220EAA1G	PC*220	20.00	190	230	3000	700	122	58	$\varnothing 20 \times 40 \times M8$	$\varnothing 13 \times 30 \times M6$	4,03
PC*225EAA1G	PC*225	25.00	160	200	2500	700	130	62	$\varnothing 20 \times 40 \times M8$	$\varnothing 13 \times 30 \times M6$	4,26
PC*230EAA1G	PC*230	30.00	140	180	2500	700	138	66	$\varnothing 22 \times 40 \times M8$	$\varnothing 20 \times 40 \times M8$	4,80

* S = LEWE OBROTY - ANTICLOCKWISE
* D = PRAWY OBROT - CLOCKWISE

P1 = MAX. CIŚNIENIEI ROBOCZE - MAX. WORKING PRESSURE
P3 = MAX. CIŚNIENIE SZCZYTOWE - MAX. PEAK PRESSURE

NA ŻĄDANIE - ON REQUEST :

PRZYŁĄCZE "BSP" - "BSP" THREADED HOUSING